

FRED B. HARTNETT PONCE
CIRCLE PARK
CONCEPTUAL DESIGN
COMMUNITY MEETING



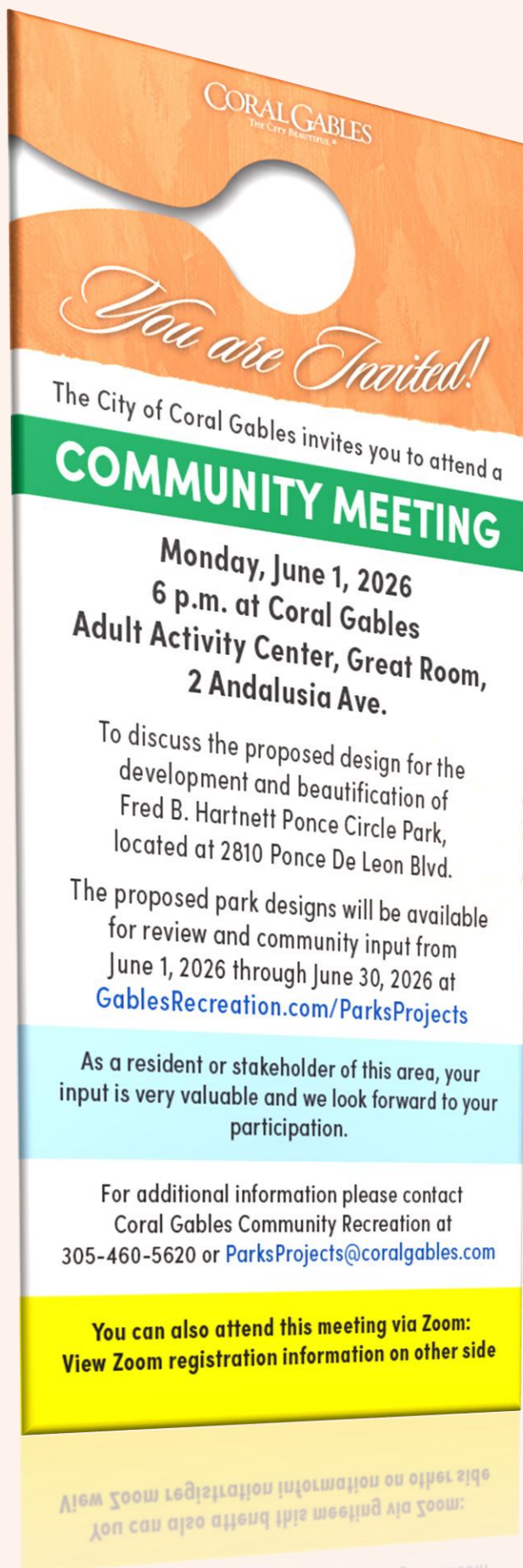
City of Coral Gables
Community Recreation

Monday, June 1, 2026



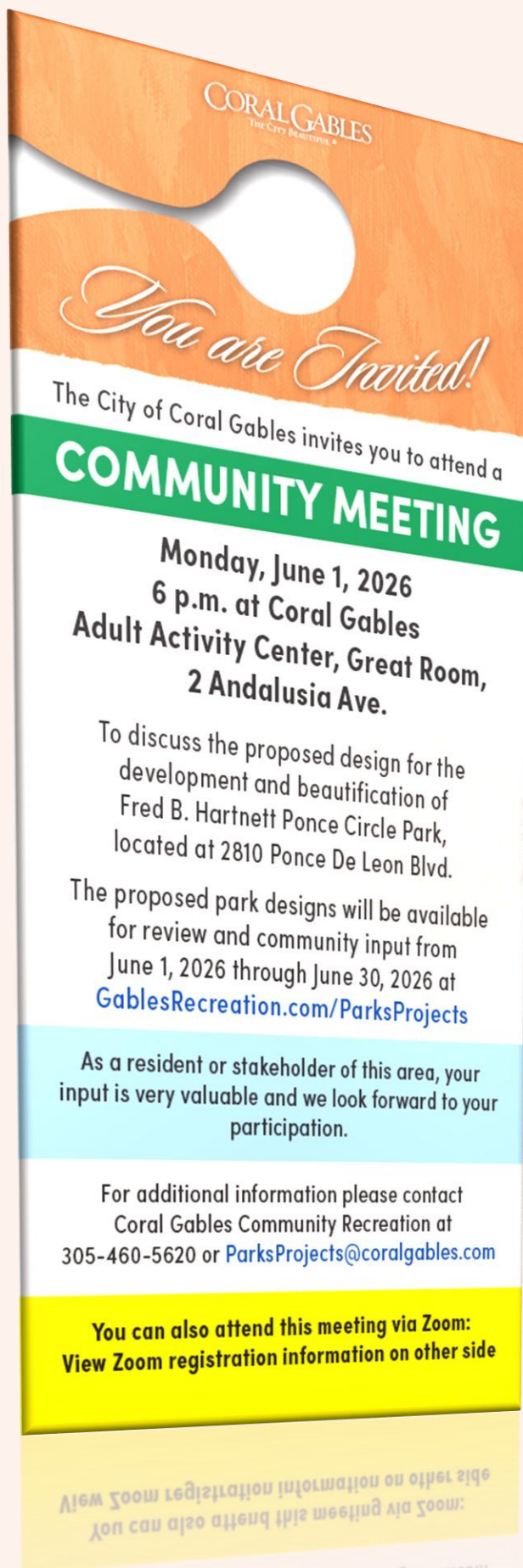
MEETING INFORMATION

- This is an in-person hybrid meeting that allows for virtual attendance from the public.
- The meeting will be recorded and serve as the meeting minutes to be shared on the city's webpage.
- Following the presentation, the panel will open the floor for in-person questions followed by virtual questions.
- The community input period will be open from Monday, June 1 through Tuesday, June 30, 2026.
- Additional comments may be submitted via email to ParksProjects@CoralGables.com.



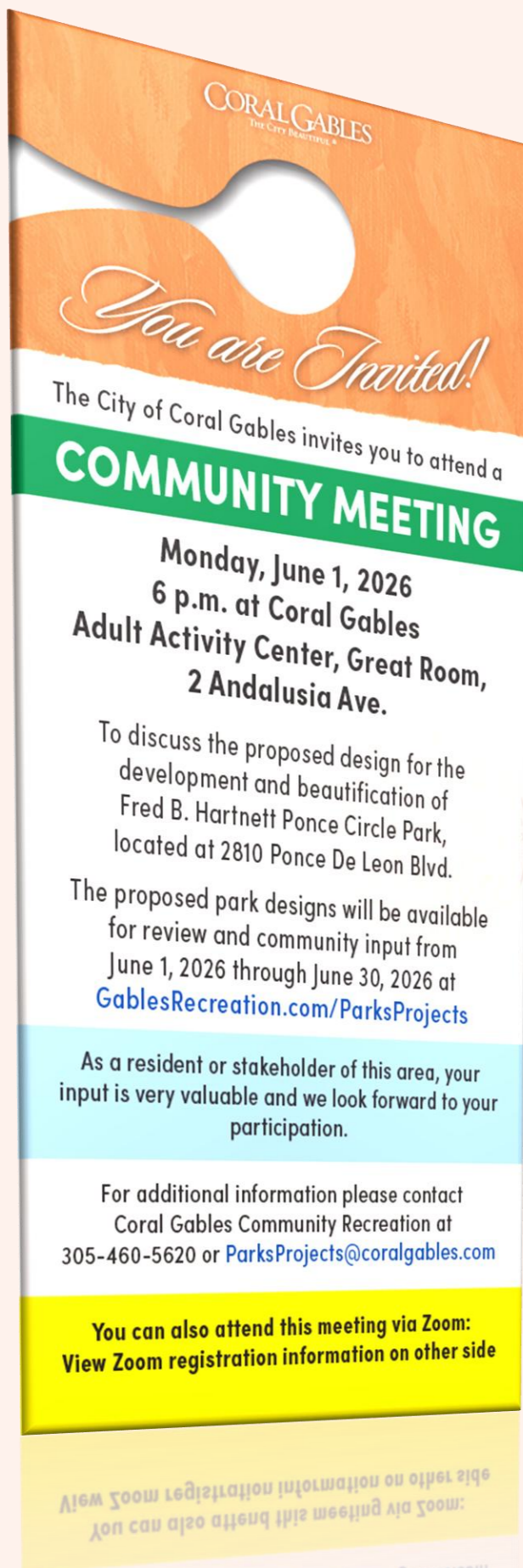
BRIEF SITE HISTORY

- In April 1995, Ponce Circle Park was dedicated as Fred B. Hartnett Ponce Circle Park in honor of Fred B. Hartnett, a former Coral Gables Mayor and City Commissioner who played an active role in the civic development of the community.
- The park serves as a recreational space for downtown Coral Gables and has been the site of many special events. Recent events include the Coral Gables Pumpkin Patch, Carnaval de Baranquilla, Festival of Lights Celebration and National Championship Watch Party.
- A renovation and/or redesign of the park was considered, reviewed and cited in both the Ponce Neighborhood Charrette and the Community Recreation Master Plan.



PROJECT STATUS

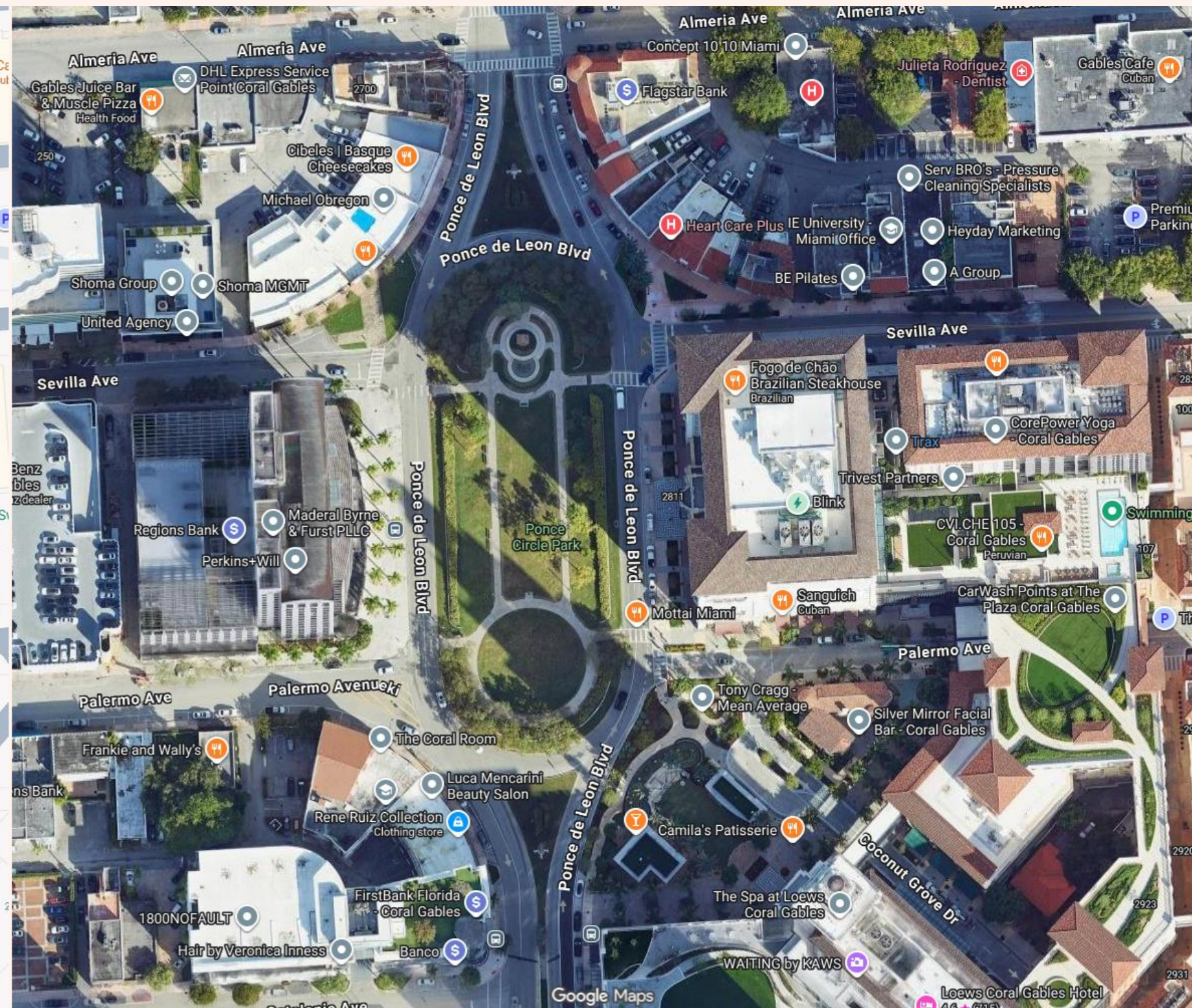
- Resolution 2024-107 passed by the City Commission gave approval for a mixed-use development, Ponce Park Residences which included conditions for improvements to Fred B. Hartnett Ponce Circle Park.
- Resolution 2025-463 amended Res. 2024-107 and also included approval for Development Management Agreement with Ponce Park Residences LLC to construct and oversee the improvements to Fred B. Hartnett Ponce Circle Park.
- Resolution 2025-94 passed by the City Commission approved the purchase of artwork from artist Frank Stella – “Puffed and Inverted Star II” with the intent of the artwork to be installed and integrated in the design of the park improvements.
- Preliminary Park design was presented and approved by the City Commission on May 19, 2026.



MAP VIEW OF SITE



AERIAL VIEW OF SITE



FRED B. HARTNETT PONCE CIRCLE PARK AERIAL VIEW



NORTH VIEW



SOUTH VIEW



EAST VIEW



WEST VIEW



FRED B. HARTNETT PONCE CIRCLE PARK AERIAL VIEW

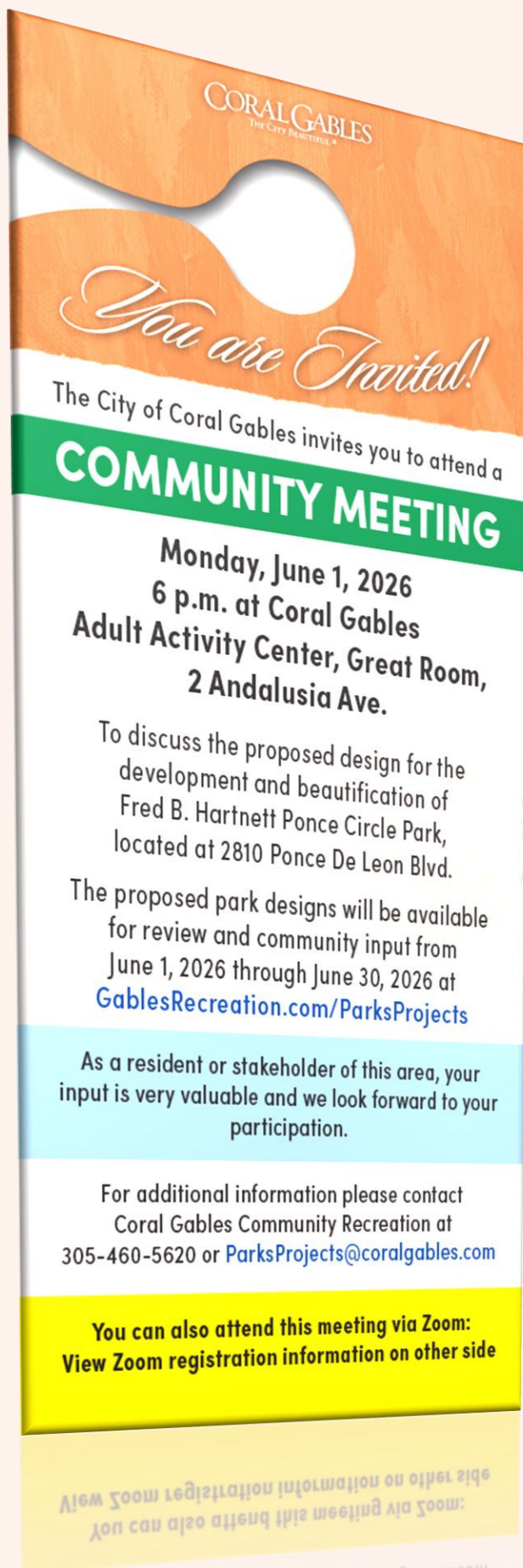
E
X
I
S
T
I
N
G

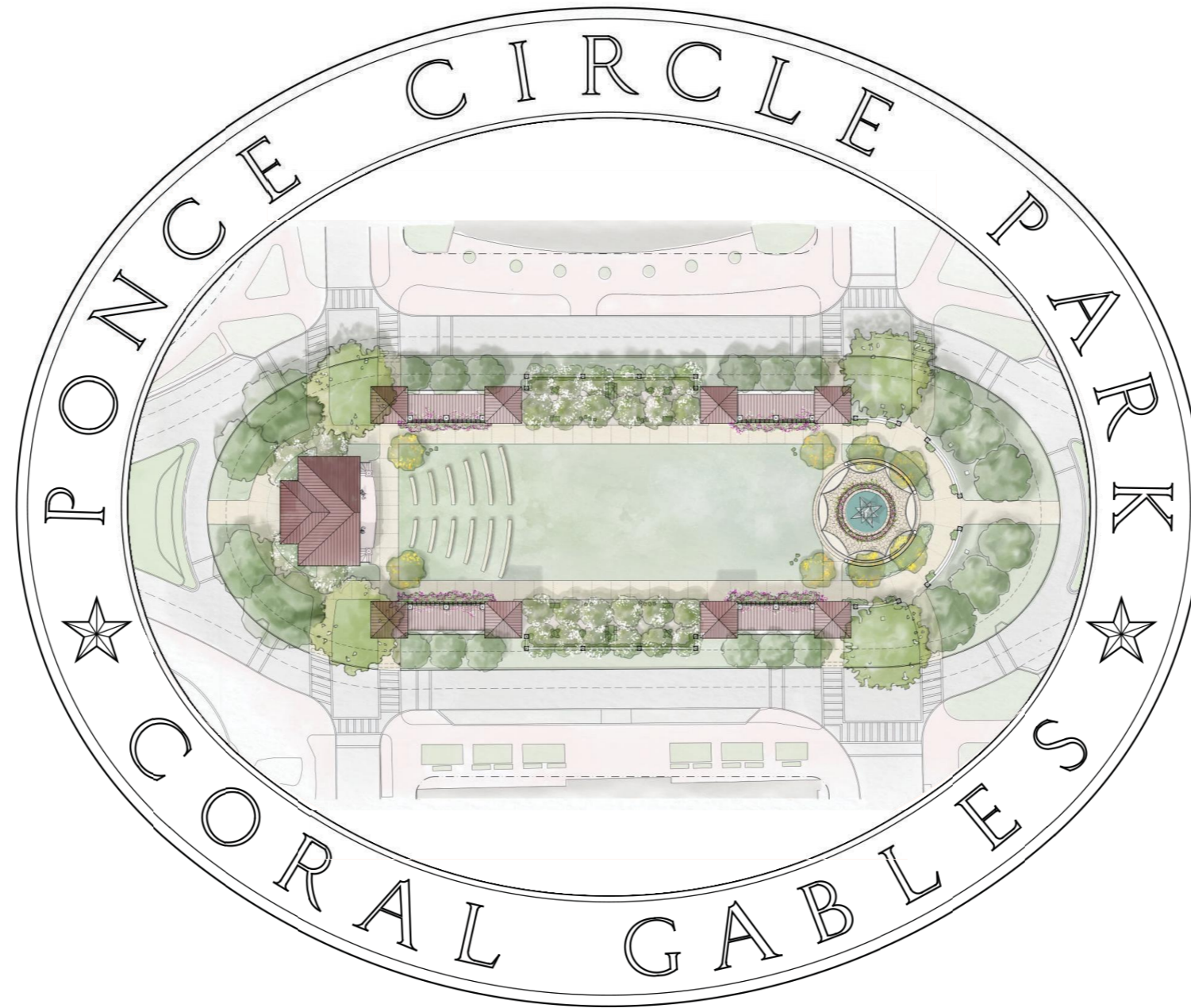
S
I
T
E



FRED B. HARNETT PONCE CIRCLE PARK PROPOSED BENEFITS

- Increase opportunities for community engagement and community programming.
- Provide enhanced recreational and gathering spaces for residents and visitors.
- Improve pedestrian safety and park accessibility.
- Support Coral Gables' commitment to high-quality public spaces and placemaking.
- Create a signature destination that contributes to the City's civic and cultural identity.





Community Meeting

de la Guardia Victoria
Architects & Urbanists, Inc.
224 Valencia Avenue
Coral Gables, Florida 33134
AA2600737

Allen Morris Company
121 Alhambra Plaza, PH1
Coral Gables, Florida 33134

Naturalicial, Inc.
5879 Sunset Drive, Suite 2
South Miami, Florida 33143

An Artistic Conception of the CRAFTS CENTER at Coral Gables, Sketched by Mr. Phineas T. Paist



Crafts Section
Coral Gables

Splendid Grouping of Craft Shops and Central Exposition Building

WHAT Elbert Hubbard so successfully carried out in the Roycroft Shops at East Aurora, N. Y.—what William Morris created in a remarkable way in Hammersmith, England—what Frederick L. Seeley has accomplished in the Biltmore Industries at Asheville—all this and even more has been planned by George E. Merrick for the new Crafts Section at Coral Gables.

Mr. Merrick's plans are based upon a more solid foundation even than existed at the conception of any of the great craft building projects mentioned above.

This foundation is the remarkable endorsement which Coral Gables has already achieved in the creation of beautiful architecture. Its plazas, entrances, business buildings and fine residences are distinctive in every way. The best experts in town planning in this country who have come to see Coral Gables agree that while Spanish, Italian and other Mediterranean types have been used with splendid effect, we are in fact really developing a type of architecture which is distinctively our own. For more than two years now Coral Gables has been creating appropriate designs in many

lines of industry to be used in its own buildings. It is now proposed to foster these industries in the Crafts Section, and to not only carry out work intended for Coral Gables' needs, but to broaden the field and supply these needs throughout the entire country.

There are more than a score of crafts which may be developed most successfully and profitably in this way. Among these are fine printing, engraving and book binding, antique and period furniture, willow and rattan furniture, interior decoration, photography, garden pottery, tiles for roofs and interiors of homes, brass, copper and iron novelties, china and glassware, ornamental stones, tapestries, jewelry, rug weaving, Indian novelties, art goods, sport goods and many others.

In the heart and center of the Crafts Section will be erected a remarkable Exposition building, where at all times will be displayed the artistic wares created in the various craft shops in this section. Here also will be found a master craftsman who will be prepared at all times to make special designs for patrons. The exposition

building will be in the center of the Crafts Plaza and will be surrounded on all sides by the artistic shops in which the crafts will be developed.

In the Crafts Section will also be located hundreds of charming homes which will house the artisans employed in the various industries, and these homes will be just as distinctive in architecture as will the crafts shops in which they find daily employment.

Both its location and the important part which the Crafts Section will play in the industrial development of Coral Gables presage the remarkable success of this section, and the splendid investment possibilities which are to be enjoyed here by early investors. It is almost an assured certainty that plots either for residential or business use will double in value more quickly than they have in any other section since Coral Gables' beginning. Those who have purchased in other sections—and those who have been waiting for the opportunity which a new section opens up—will not fail to take advantage of the opportunity to buy early.

Opening of the Crafts Section



THE PERMANENT EXPOSITION BUILDING IN CORAL GABLES CRAFTS SECTION

A New and Interesting Coral Gables Development Feature Offering Wonderful Opportunities for Profitable Investment

THE opening of the new Crafts Section at Coral Gables is one of the most interesting announcements regarding the development of this beautiful suburb which has been made this year. It is an announcement that is equally important both to the students of Miami's progress in art and industry and to the investor keen to the chance to turn a quick profit in real estate.

The new Crafts Section joins the distinctive Business Section of Coral Gables just south of Coral Way between LeJuene and Douglas Roads. Its principal street will be Ponce de Leon Boulevard, the splendid 100 foot wide artery of the Business Sections as well as Douglas and Flagler Sections.

The new section is therefore linked closely with all of the

Sections which lie to the north and especially with Flagler Street, the main business artery of Miami and western Miami. It is also linked with the distinctive County Club Section on the west through the continuation of Avenue Anastasia to the Crafts Center and with all the other sections by its frontage on Coral Way, the great east and west boulevard of Coral Gables.

But the dominating significance of the Crafts Section is not entirely a matter of fine location. It is in a far greater way found in the serious purpose of establishing here a craft center of international repute, something which Coral Gables is in a better position to carry out successfully for self evident reasons than any other city or suburb in the South. The details of this ambitious plan are told on the following pages.

CORAL GABLES

GEORGE E. MERRICK,

America's Finest Suburb

MIAMI, FLORIDA

Executive Offices: 152-154-156-158 E. Flagler Street, Miami, Florida

BRANCH OFFICES IN ALL FLORIDA CITIES



Picnic on the Green



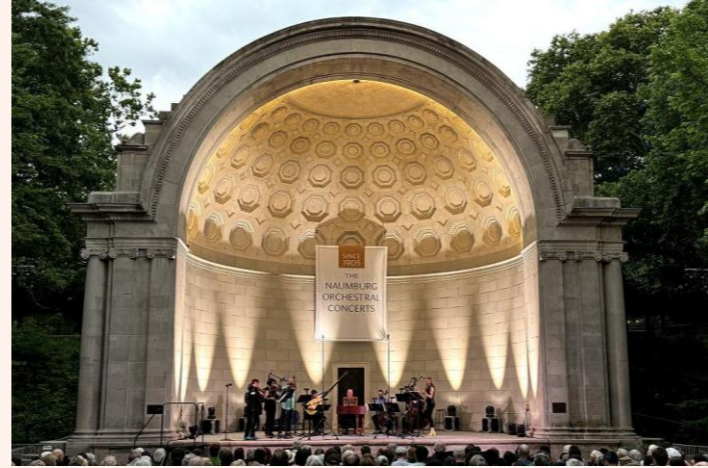
Lounging by the Promenade



Yoga in the Green



Piano in the Park



Concerts at the Odeon



Lunch at the Allee



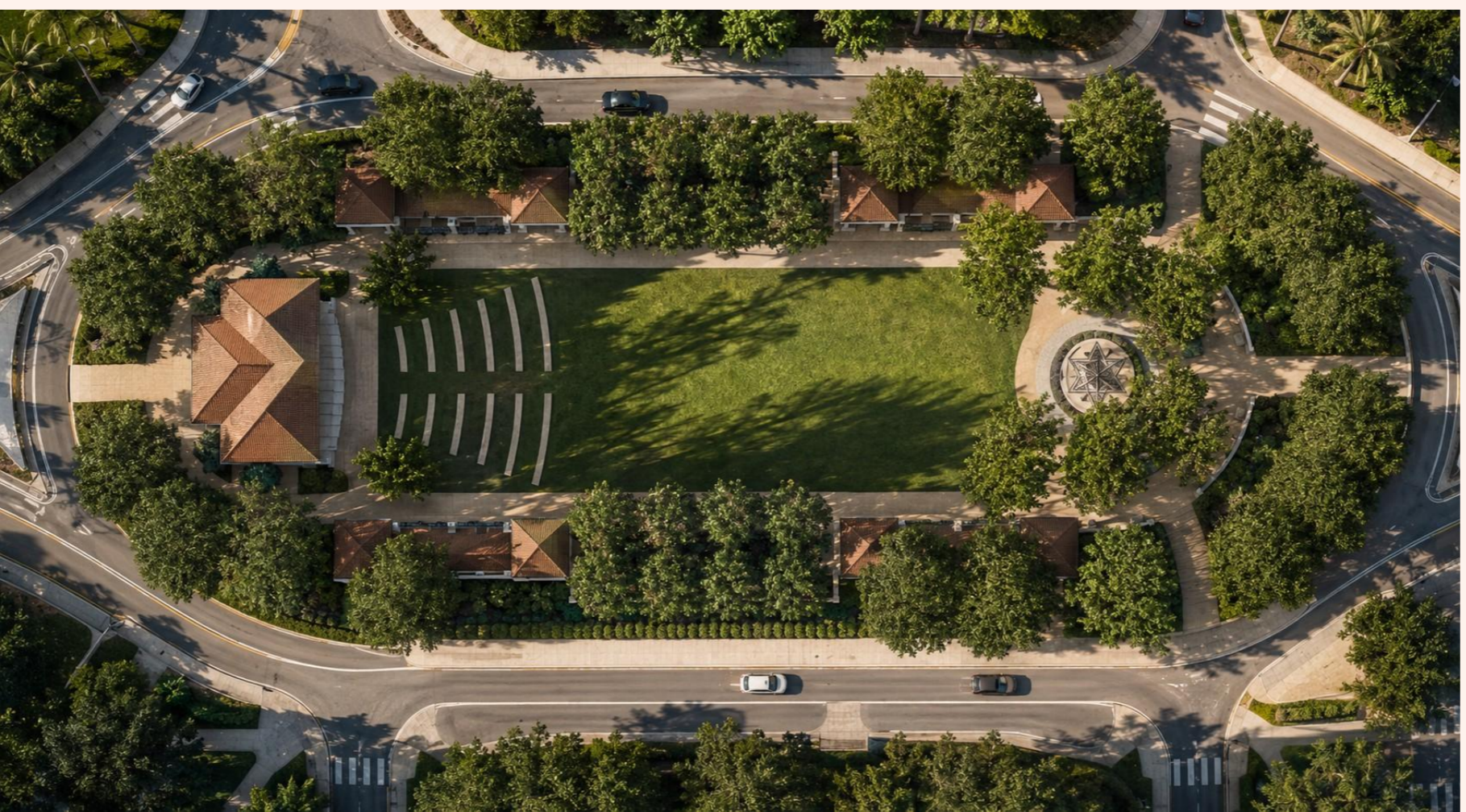
Lunch at the Park

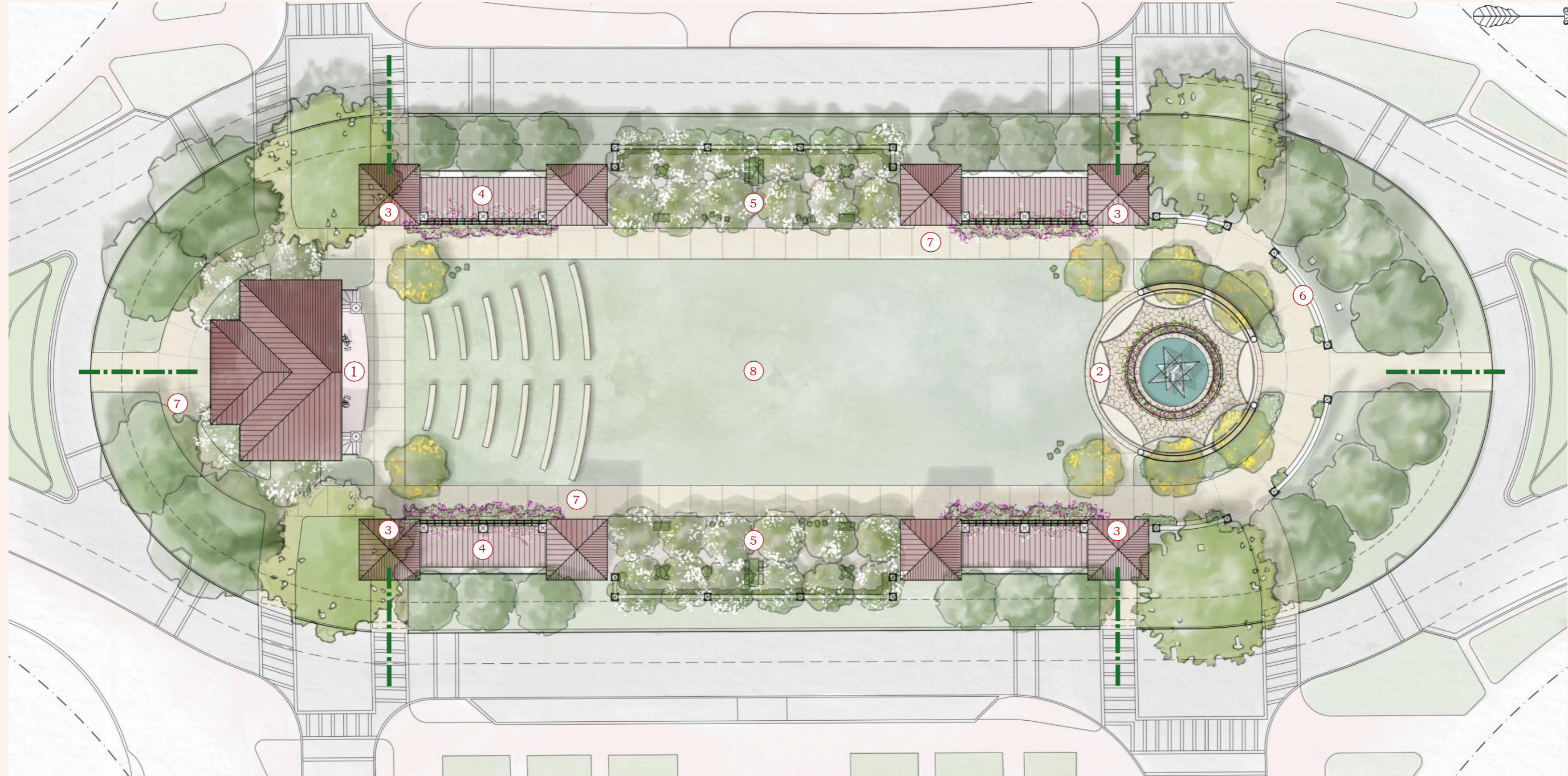


Art in the Park



Strolling Along the Promenade





- Key*
- | | | |
|-----------------------|--------------|----------------------------|
| 1. The Odeon | 3. Pavilions | 6. Curving Low Wall & Seat |
| 2. Sculpture Fountain | 4. Arcade | 7. Promenade |
| | 5. Allée | 8. Green (Event lawn) |



- Key*
- | | | |
|-----------------------|--------------|-----------------------------|
| 1. The Odeon | 3. Pavilions | 6. Curving Low Wall & Seat |
| 2. Sculpture Fountain | 4. Arcade | 7. Promenade |
| | 5. Allée | 8. Large Green (Event Lawn) |



*June 1, 2026
de la Guardia Victoria
Architects*

View from East Ponce

*Ponce Circle Park
Coral Gables, Florida*



*June 1, 2026
de la Guardia Victoria
Architects*

View from East Ponce

*Ponce Circle Park
Coral Gables, Florida*



*June 1, 2026
de la Guardia Victoria
Architects*

View from Path to the Sculpture Garden

*Ponce Circle Park
Coral Gables, Florida*



*June 1, 2026
de la Guardia Victoria
Architects*

View of the Entry Pavilion from West Ponce

*Ponce Circle Park
Coral Gables, Florida*



*June 1, 2026
de la Guardia Victoria
Architects*

View of Puffed & Inverted Star II

*Ponce Circle Park
Coral Gables, Florida*



*June 1, 2026
de la Guardia Victoria
Architects*

View of the Sculpture from the Green

*Ponce Circle Park
Coral Gables, Florida*



*June 1, 2026
de la Guardia Victoria
Architects*

View of the Colonnade from the Park

*Ponce Circle Park
Coral Gables, Florida*



*June 1, 2026
de la Guardia Victoria
Architects*

View into the Park from the Pavilion

*Ponce Circle Park
Coral Gables, Florida*



June 1, 2026
de la Guardia Victoria
Architects

Ponce Circle Park
Coral Gables,
Florida

View of the Allee from the Pavilion



June 1, 2026
de la Guardia Victoria
Architects

View of The Odeon

Ponce Circle Park
Coral Gables, Florida



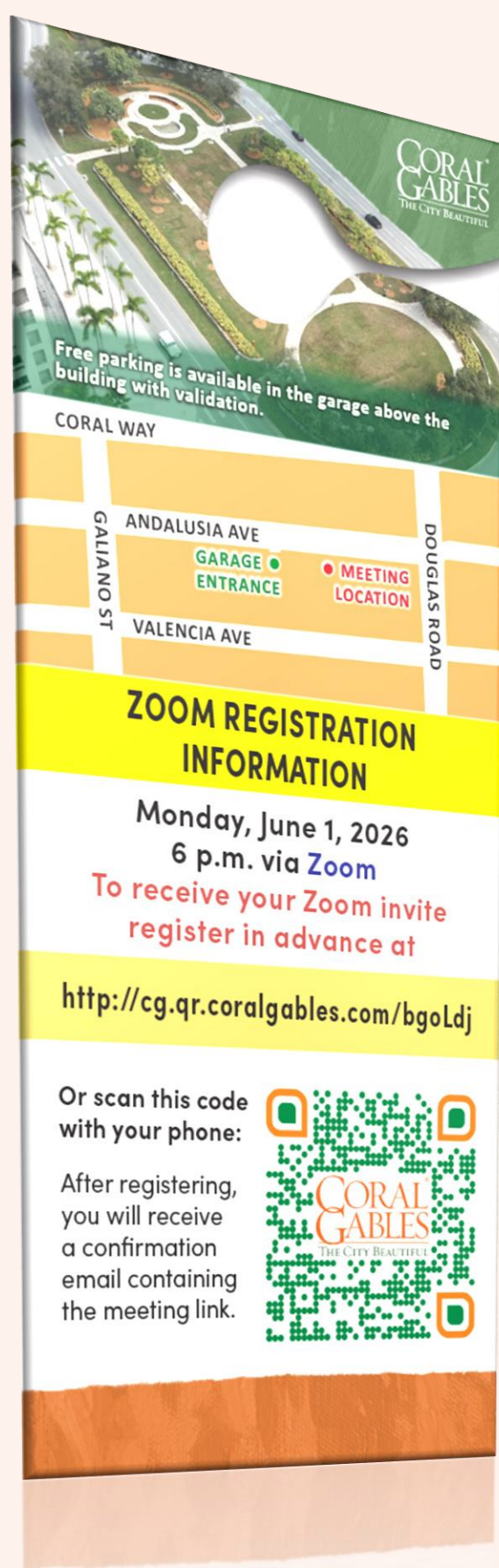
June 1, 2026
de la Guardia Victoria
Architects

Ponce Circle Park
Coral Gables,
Florida

View of Puffed & Inverted Star II

PROJECT SUMMARY

- Proposed park design and layout
- Open-air performance and event space
- Public art feature
- Pedestrian safety and accessibility improvements
- Landscaping and beautification enhancements
- Space for Community programming and special events
- Historic character in design



FRED B. HARTNETT PONCE CIRCLE PARK

WHAT'S NEXT

Free parking is available in the garage above the building with validation.

CORAL WAY

ANDALUSIA AVE

GARAGE ENTRANCE

MEETING LOCATION

VALENCIA AVE

ZOOM REGISTRATION INFORMATION

Monday, June 1, 2026
6 p.m. via Zoom

To receive your Zoom invite register in advance at

<http://cg.qr.coralgables.com/bgoLdj>

Or scan this code with your phone:

After registering, you will receive a confirmation email containing the meeting link.

CORAL GABLES
THE CITY BEAUTIFUL

- Preliminary Design has been approved by Commission with direction to provide the design to the community for input.
- **We are here:** Community input meeting presentation.
- Community Input will be collected for one month. Input from this meeting as well as all input given through e-mail will be collected and reviewed. Once the input period is completed, all input will be reviewed.
- If needed, additional community input opportunities will be scheduled.
- Once community input is completed, the next step is to complete the design with formalized plans.
- Following completion of plans, procurement for construction, and permitting will commence.

*For More
Information & Commentary*

FOR ADDITIONAL INPUT THROUGH
TUESDAY, JUNE 30 PLEASE EMAIL
PARKSPROJECTS@CORALGABLES.COM

