

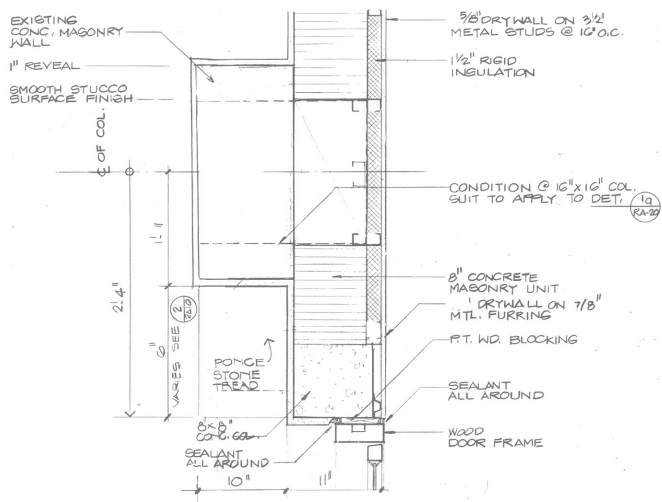
Spillis Candela & Partners, Inc.
 Coral Gables, Florida
 Architects/Engineers/Planners

The Colonnade -
 Coral Gables, Florida
 Interbrook Development Company
 Existing Building

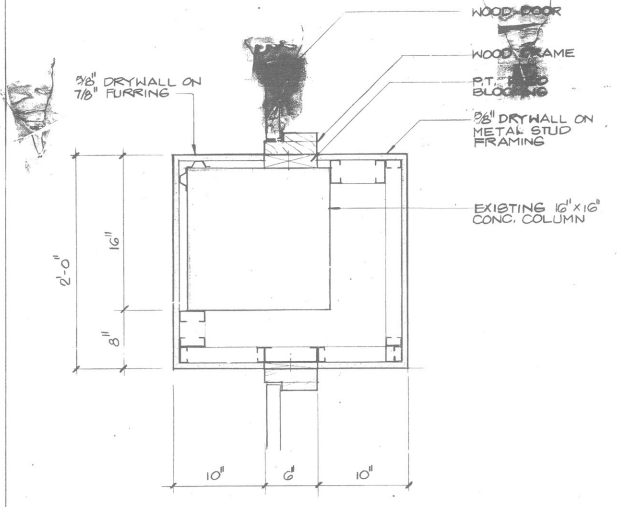
BUILDING SECTION

Project no. C-6049
 Drawn by A. A.
 Date 12-8-86
 Revisions:
 ADD 1-12-87
 ADD 2-19-87
 G-2-87
 G-20-87
 7-18-87

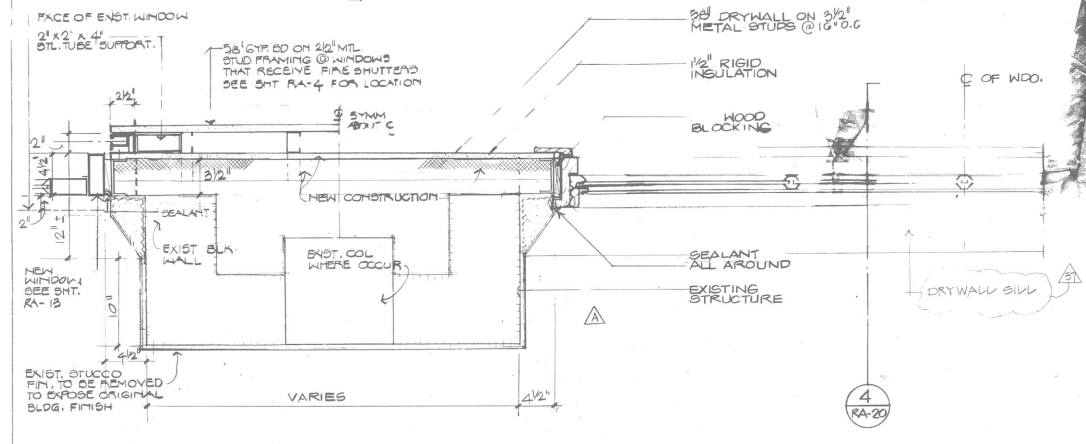
Sheet no. **RA6**



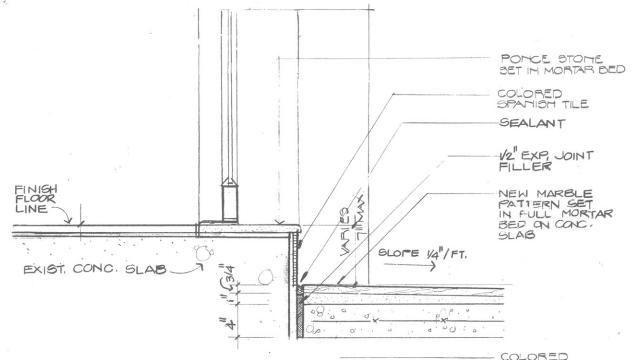
1 TYPICAL DOOR JAMB DET. @ EXTERIOR 1/2" = 1'-0"



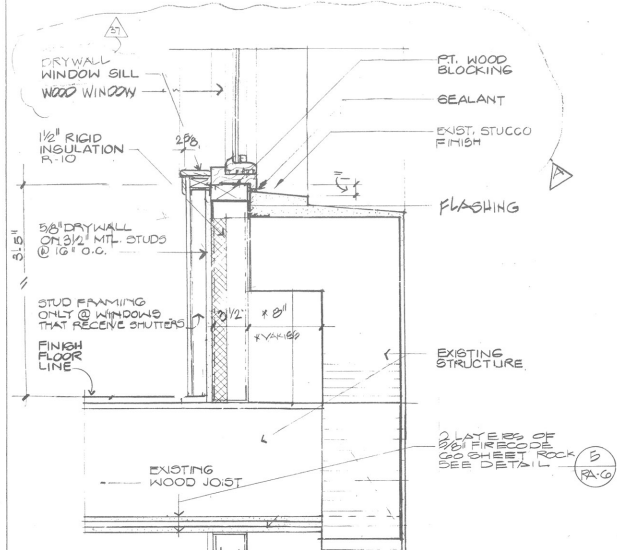
2 TYPICAL DOOR JAMB DET. @ INTERIOR 1/2" = 1'-0"



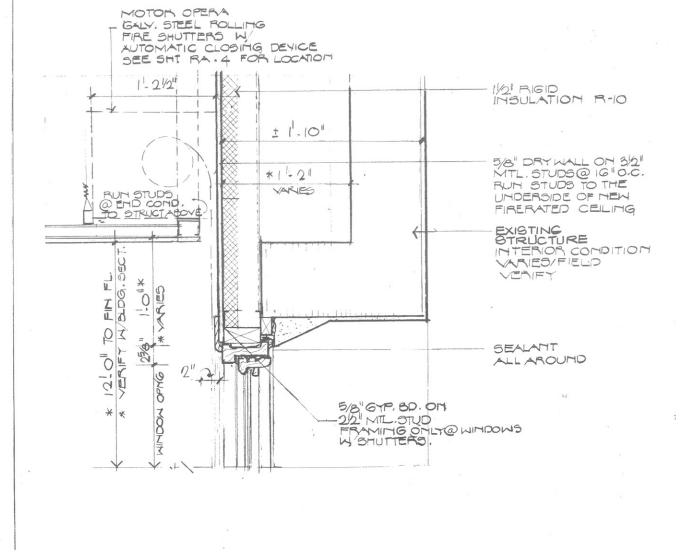
3 TYPICAL WINDOW JAMB DET. @ MIRACLE MILE WDGs. 1/2" = 1'-0"



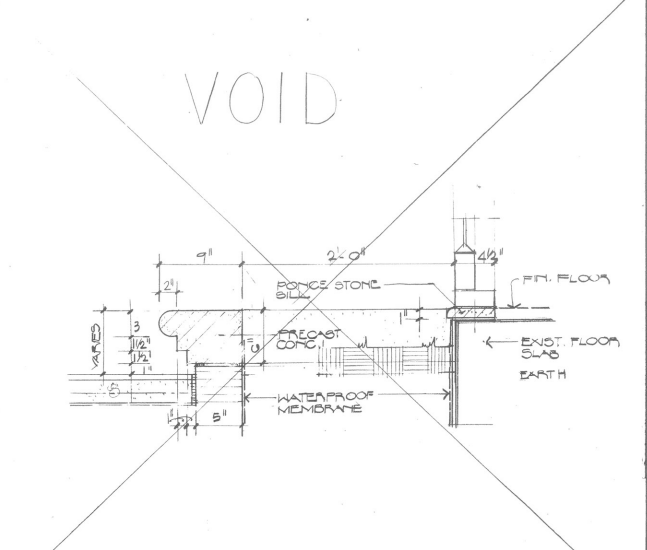
4 SILL DETAIL @ MIRACLE MILE 1ST. FLR. WDGs. 1/2" = 1'-0"



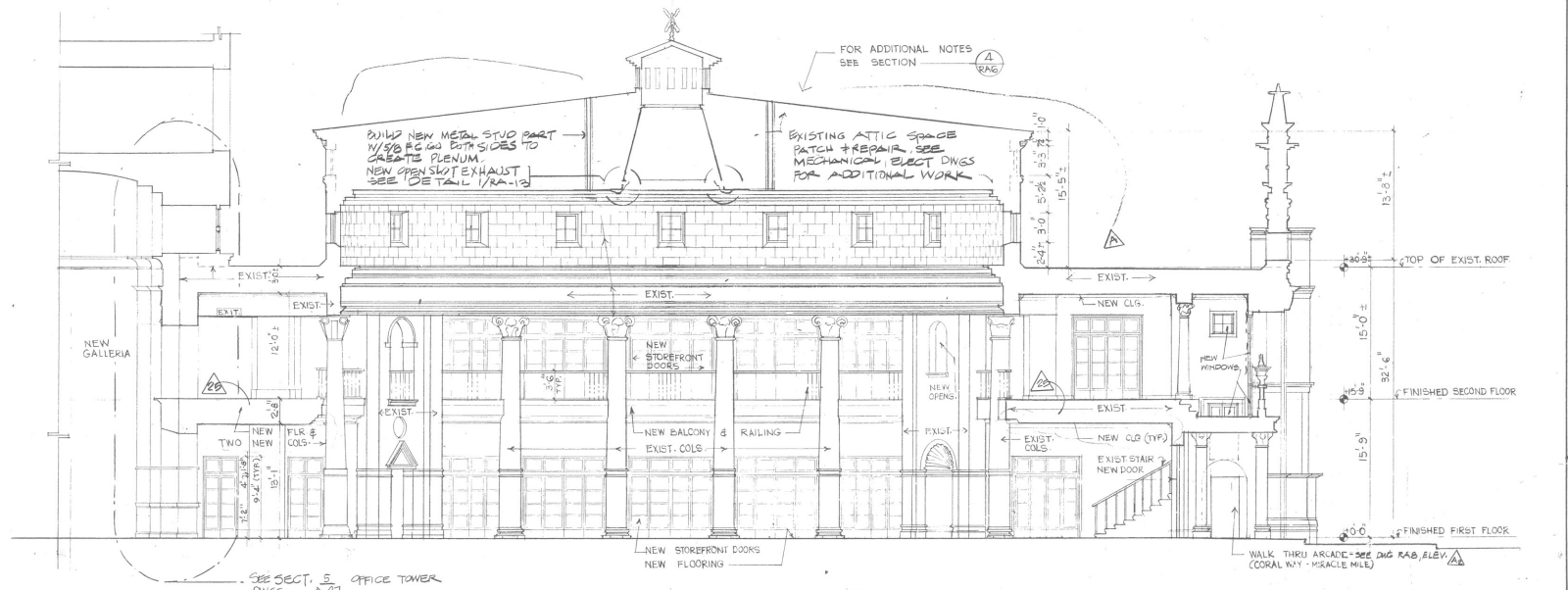
5 SILL DETAIL @ MIRACLE MILE 2ND. FLR. WDGs. 1/2" = 1'-0"



6 TYPICAL HEAD DET. @ MIRACLE MILE WDGs. 1/2" = 1'-0"



7 PLANTER BOX SCALE: 1/2" = 1'-0"



SECTION SCALE: 1/8" = 1'-0"



Spillis Candela & Partners, Inc.
Architects, Engineers, Planners
Local Offices: Orlando, Fort Lauderdale

The Colonnade -
Coral Gables, Florida
Development Company
Interbrook Existing Building

CORAL WAY ELEVATIONS /
SECTIONS

Project no. C8012
Drawn by
Approved by

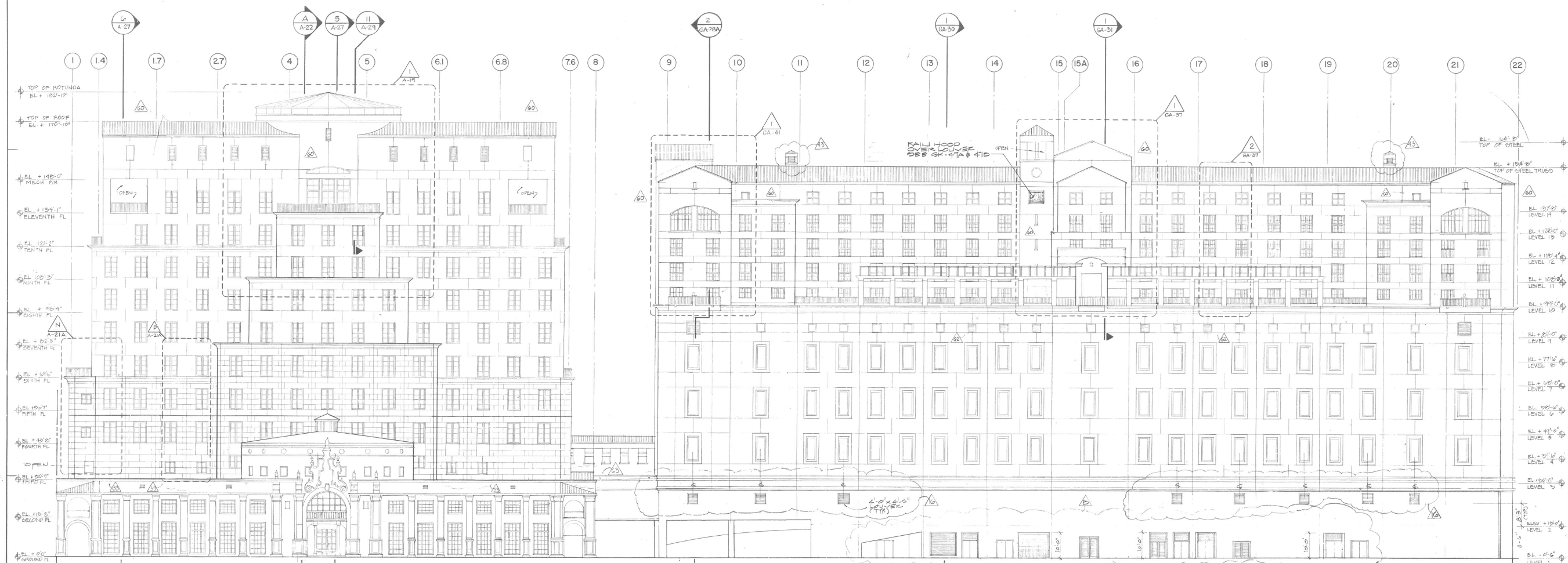
Date: 7-26-85
Revisions:
PERMIT ISSUE 9-2-85

PERMANENT ELEVATIONS 10-27
PARTIAL PERMITS 11-11-85

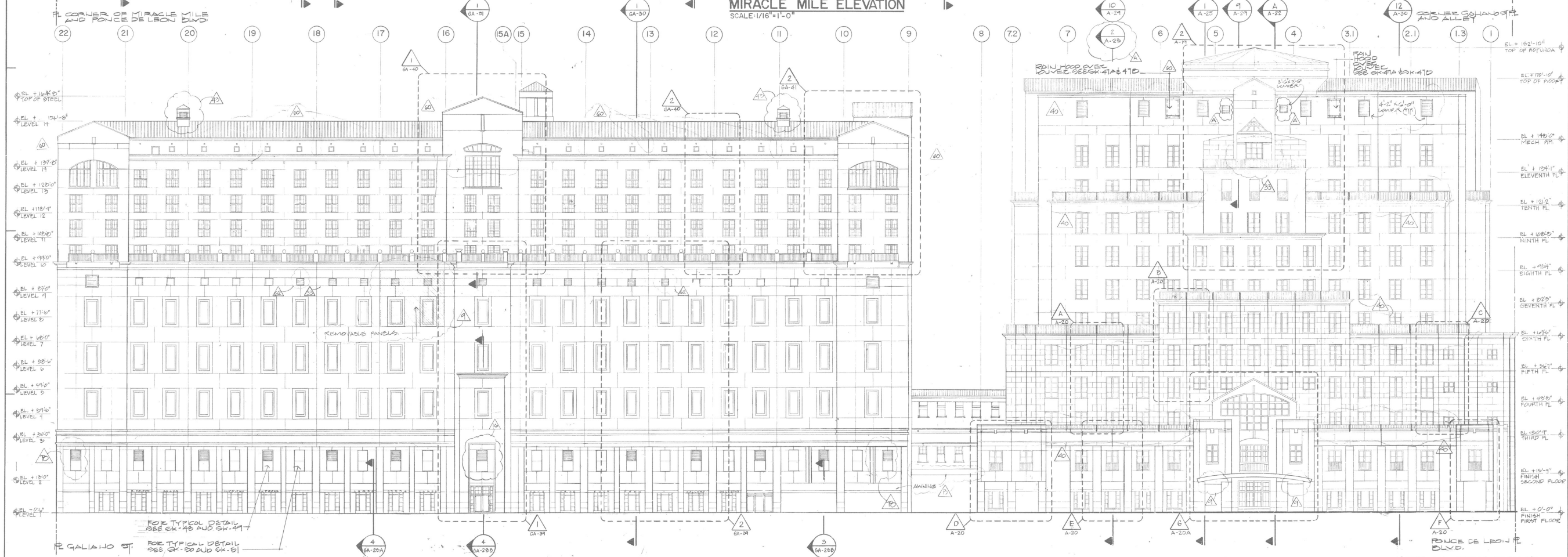
11-27-85
PROGRESS DET.
12-24-87

Sheet no.

RA8-A



MIRACLE MILE ELEVATION
SCALE: 1/16" = 1'-0"



ARAGON ELEVATION
SCALE: 1/16" = 1'-0"

Spillis Candela & Partners, Inc.
Architects Engineers Planners
Coral Gables, Florida

The Colonnade
Coral Gables, Florida
Development Company
Interbrook

EXTERIOR ELEVATIONS
SCALE 1/16" = 1'-0"

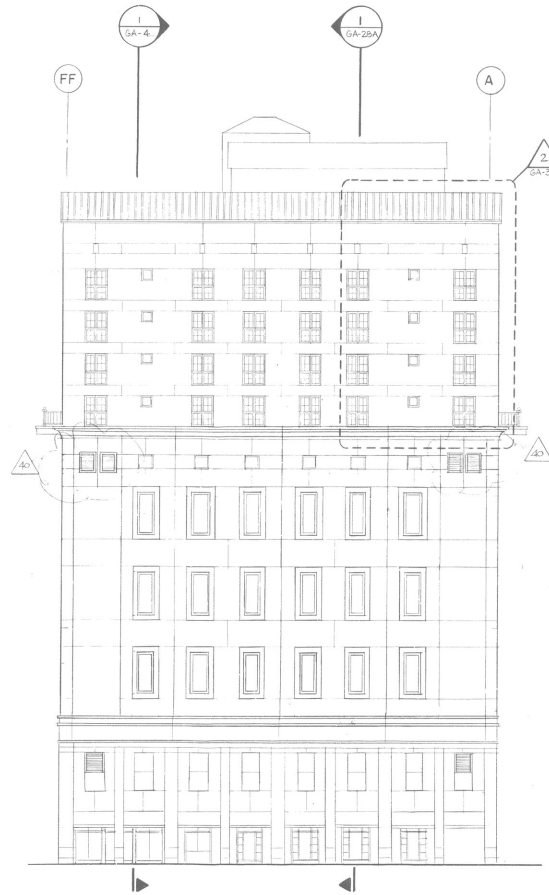
Project no. C-6049
 Drawn by
 Approved by
 Date 12-8-86

Revisions	Date
ADD 1-12-87	
ADD 2-19-87	
ADD 3-4-87	
ADD 5-15-87	
ADD 8-21-87	
ADD 10-15-87	
ADD 10-30-87	
BRIDGE ADD 12-23-87	
ADD 3-23-88	
CONTROL JTS & SCROLLS	
SHEET NO. 4-6-88	

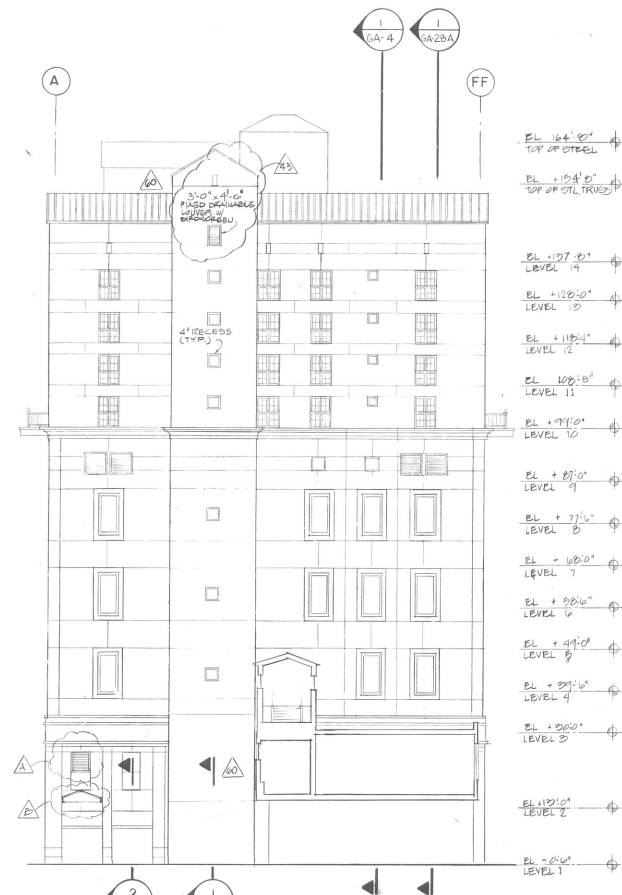
A-17

NOTE: ALL STUCCO FINISH TO BE PAINTED.

10 ADDITIONAL LOUVER THEATER LEVEL.
11 ADDED RAIL HOOD 8-1-88
12 4-B-88

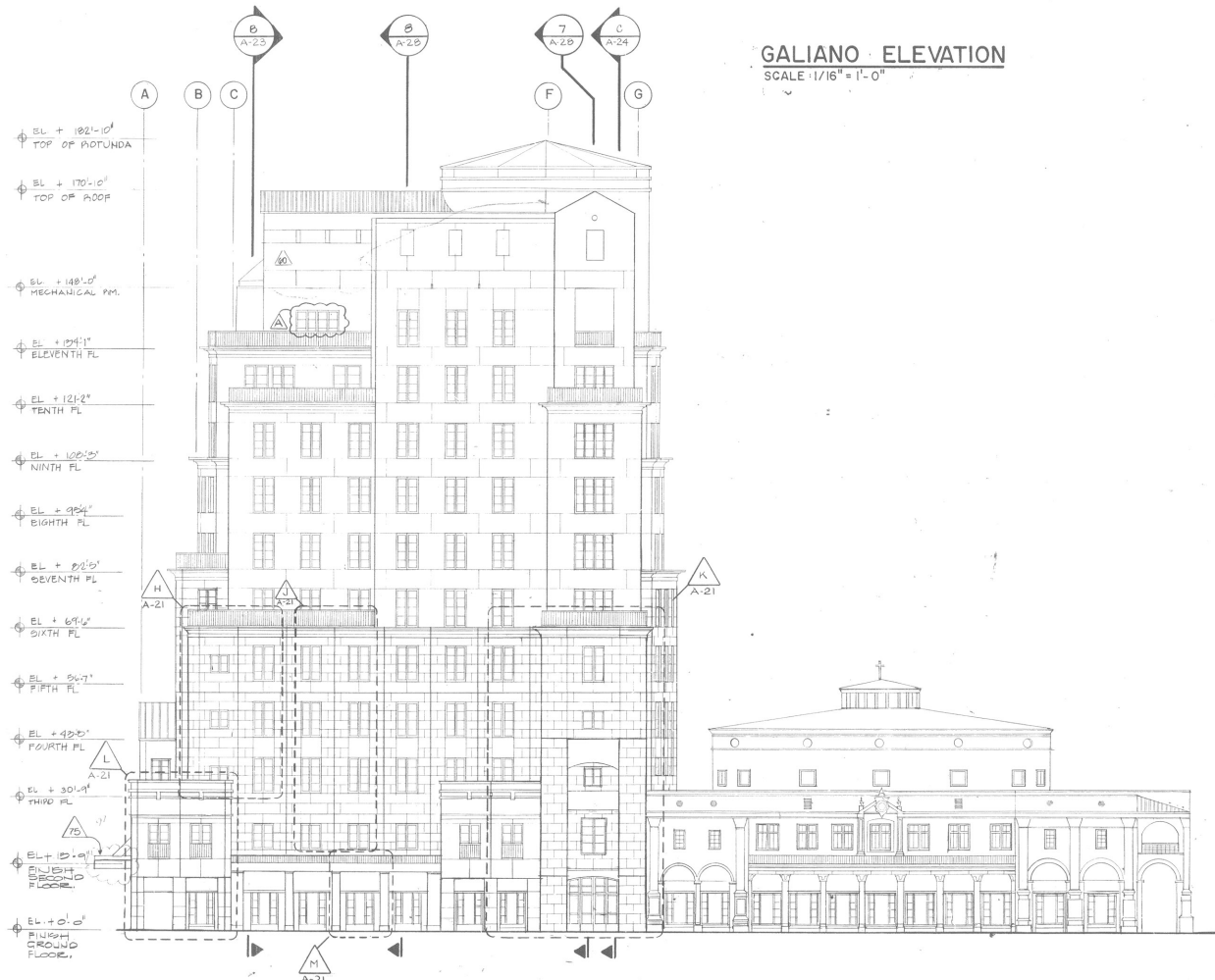


GALIANO ELEVATION
SCALE: 1/16" = 1'-0"



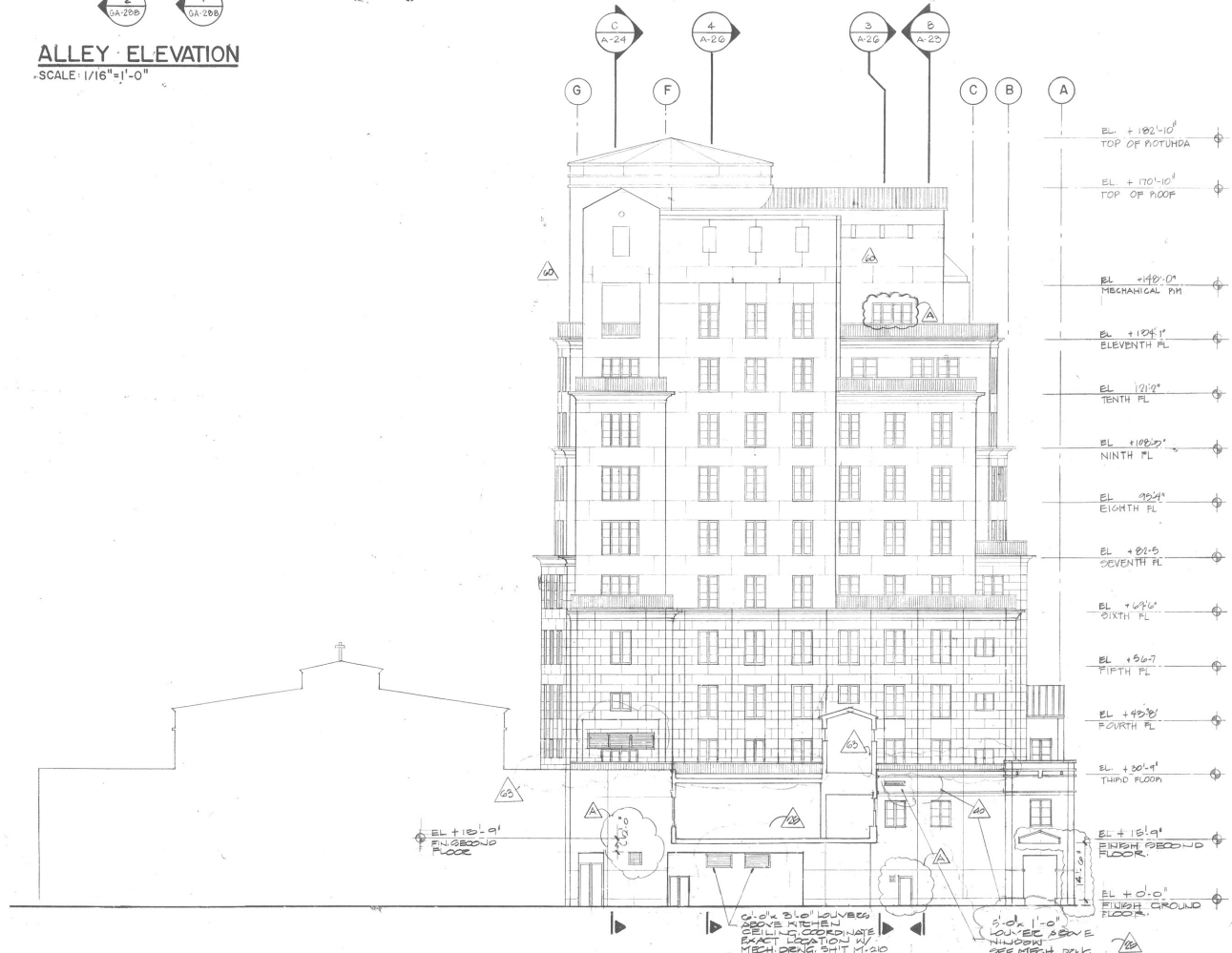
ALLEY ELEVATION
SCALE: 1/16" = 1'-0"

- EL +166'-0" TOP OF STEEL
- EL +154'-0" TOP OF OIL TRAYS
- EL +137'-0" LEVEL 14
- EL +120'-0" LEVEL 10
- EL +118'-4" LEVEL 12
- EL +102'-0" LEVEL 11
- EL +99'-0" LEVEL 10
- EL +87'-0" LEVEL 9
- EL +77'-6" LEVEL 8
- EL +60'-0" LEVEL 7
- EL +52'-6" LEVEL 6
- EL +44'-0" LEVEL 5
- EL +37'-0" LEVEL 4
- EL +20'-0" LEVEL 3
- EL +12'-0" LEVEL 2
- EL +0'-0" LEVEL 1



PONCE DE LEON ELEVATION
SCALE: 1/16" = 1'-0"

- EL +182'-10" TOP OF ROTUNDA
- EL +170'-10" TOP OF ROOF
- EL +148'-0" MECHANICAL RM.
- EL +124'-1" ELEVENTH FL.
- EL +121'-2" TENTH FL.
- EL +108'-2" NINTH FL.
- EL +92'-4" EIGHTH FL.
- EL +82'-5" SEVENTH FL.
- EL +69'-4" SIXTH FL.
- EL +54'-7" FIFTH FL.
- EL +42'-5" FOURTH FL.
- EL +30'-9" THIRD FL.
- EL +15'-0" FINISH SECOND FLOOR.
- EL +0'-0" FINISH GROUND FLOOR.

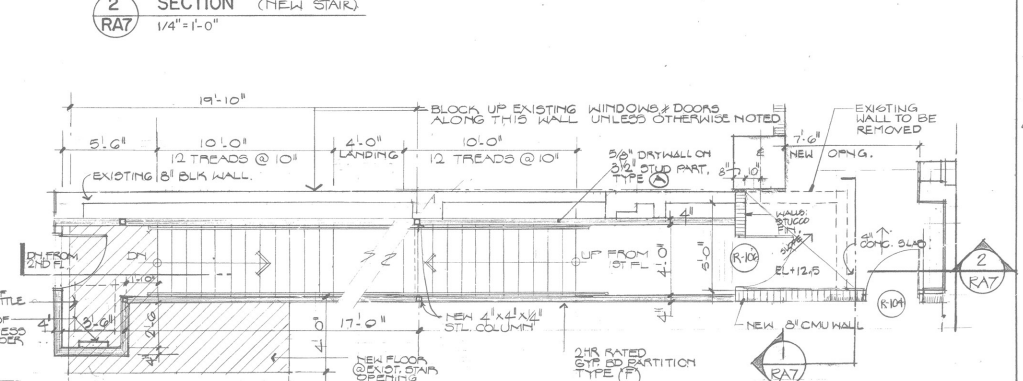
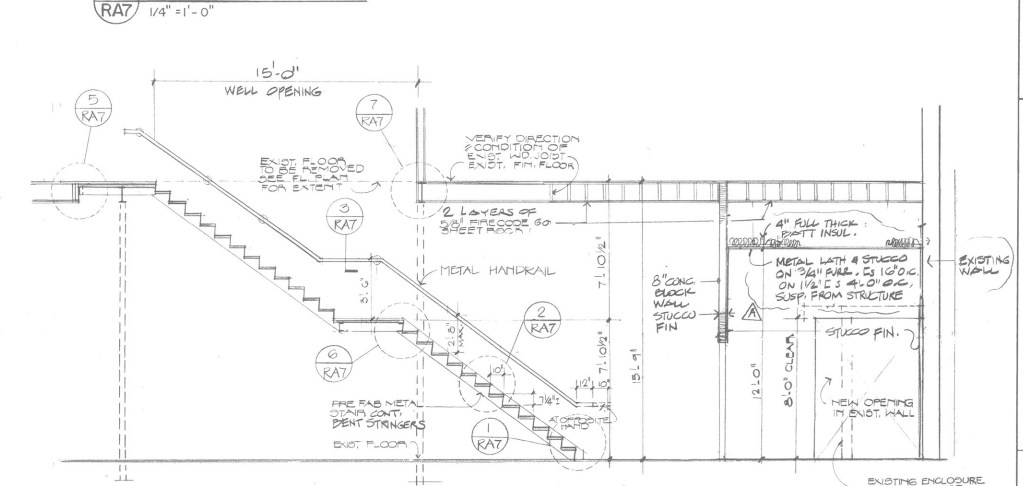
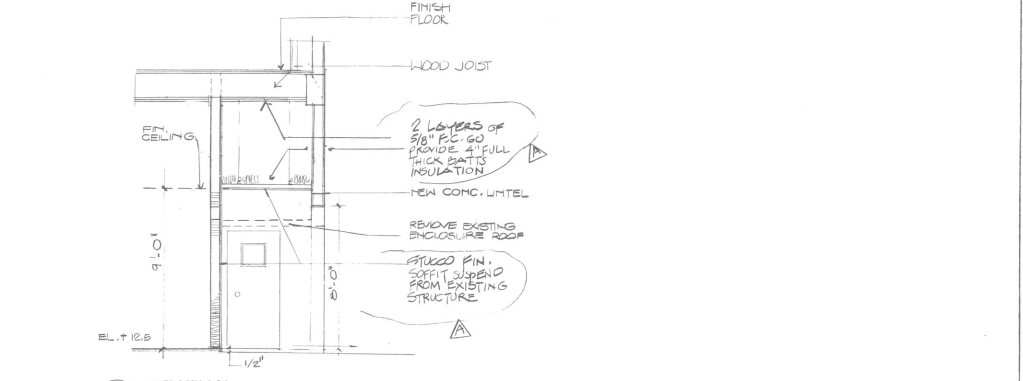
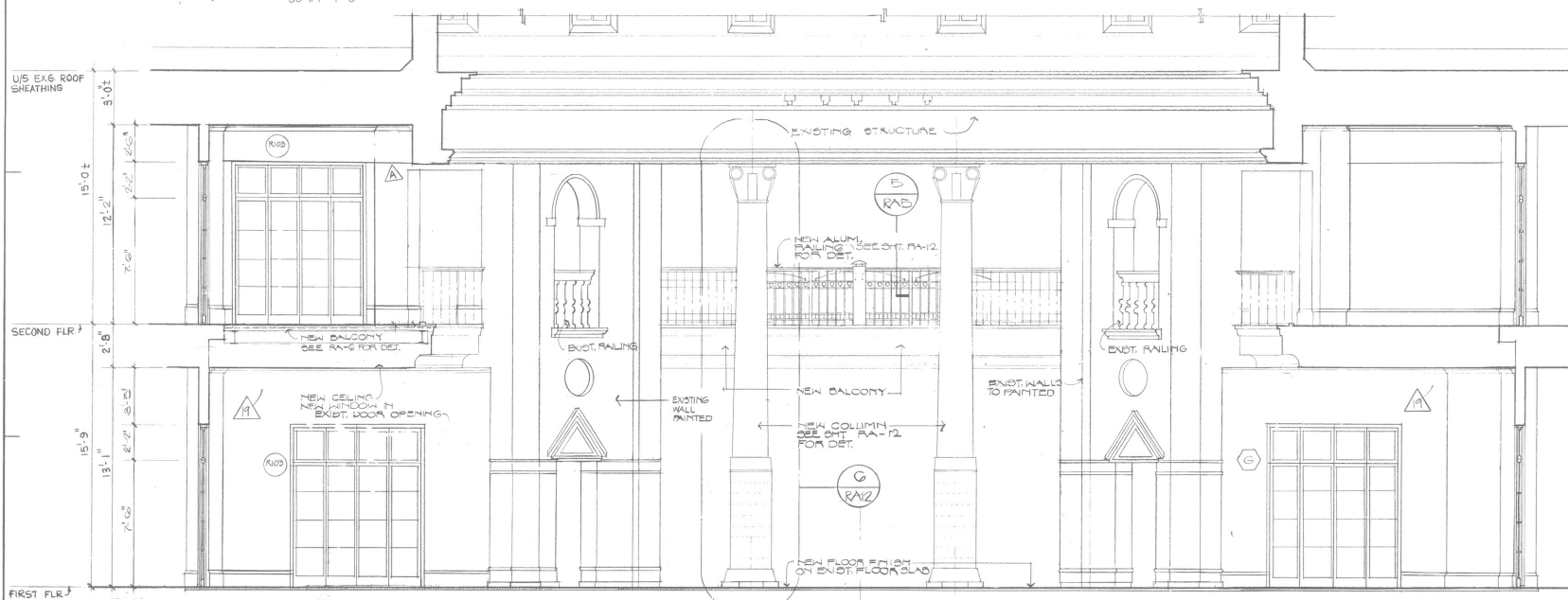
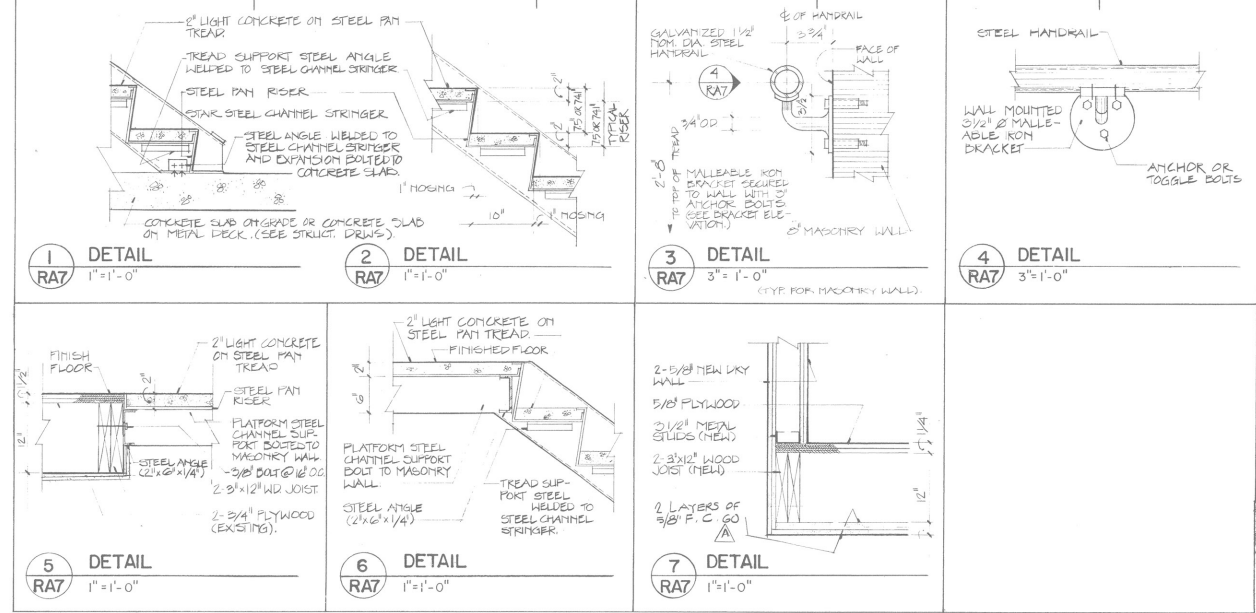


ALLEY ELEVATION
SCALE: 1/16" = 1'-0"

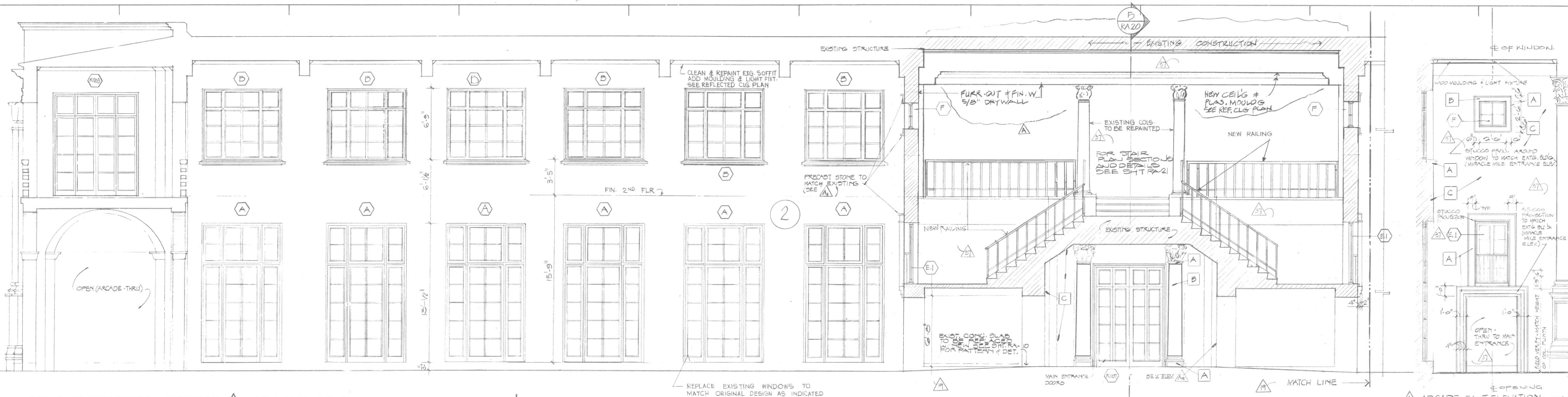
- EL +182'-10" TOP OF ROTUNDA
- EL +170'-10" TOP OF ROOF
- EL +148'-0" MECHANICAL RM.
- EL +124'-1" ELEVENTH FL.
- EL +121'-2" TENTH FL.
- EL +108'-2" NINTH FL.
- EL +92'-4" EIGHTH FL.
- EL +82'-5" SEVENTH FL.
- EL +69'-4" SIXTH FL.
- EL +54'-7" FIFTH FL.
- EL +42'-5" FOURTH FL.
- EL +30'-9" THIRD FLOOR.
- EL +15'-0" FINISH SECOND FLOOR.
- EL +0'-0" FINISH GROUND FLOOR.

NOTE: ALL STUCCO FINISH TO BE PAINTED.

Project no. C-6049
Drawn by A.A.
Approved by A.A.
Date 12-8-86
Revisions:
ADD 1-12-87
ADD 2-19-87
ADD 6-23-87
ADD 10-13-87
ADD 10-20-87
ADD 12-23-87
ADD 3-23-88
STUCCO CONTROL Joints & Cornishes
12-7-88
Sheet no.





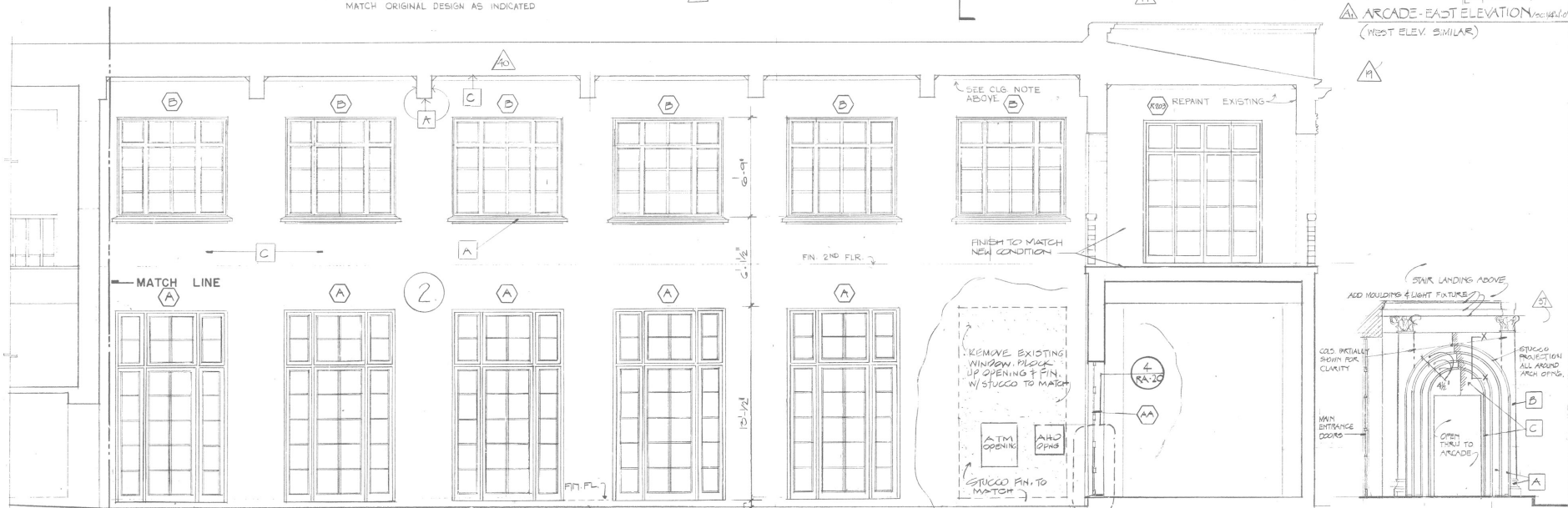


PARTIAL ELEVATION / SECTION A MIRACLE MILE

SC: 1/4" = 1'-0"

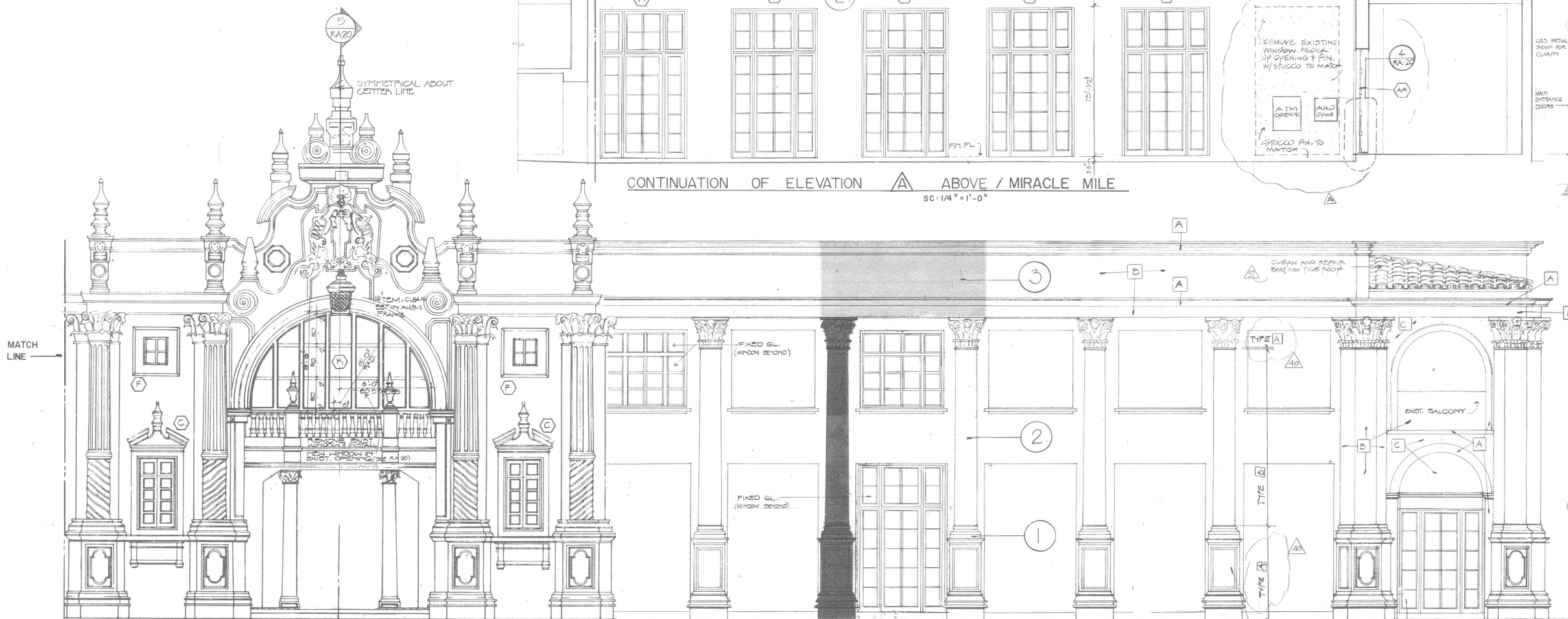
SEE ELEVATION BELOW WITH COLUMNS & FOREGROUND

- TREATMENT NO. 1 - (1) RESURFACING CAST STONE
- TREATMENT NO. 2 - (2) RESURFACING STUCCO
- TREATMENT NO. 3 - (3) CLEANING AND PAINTING OVER EXIST. COATING.



CONTINUATION OF ELEVATION A ABOVE / MIRACLE MILE

SC: 1/4" = 1'-0"

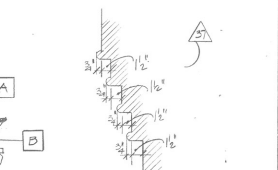


PARTIAL ELEVATION / MIRACLE MILE A

SC: 1/4" = 1'-0"

ARCADÉ - EAST ELEVATION (WEST ELEV. SIMILAR)

MAIN ENTRANCE EAST ELEVATION (WEST ELEV. SIMILAR)



- SECT. DET. X-X SC: 1" = 1'-0"
- DENOTES COLOR TYPES:
- A - DARK COLOR (2M4G E)
 - B - LIGHT COLOR (2H4G G)
 - C - MEDIUM COLOR (2H4G F)
- ALL PAINT NUMBERS ARE BY "DEVOTE PAINT" AND ARE TO BE FORMULATED BY KIEM LABORATORIES FOR APPLICATION TO EXISTING BUILDING
- 40 REUSED COLORS

Spillis Candela & Partners, Inc.
Architects/Engineers/Planners
Coral Gables, Florida

The Colonnade -
Coral Gables, Florida
Interbrook Development Company
Existing Building

CORAL WAY ELEVATIONS / SECTIONS

Project no. C-6049
Drawn by Approved by A. A.
Date 12-8-86
Revisions:
ADD 1-12-87
G-2-87
9-15-87
10-15-87
11/17/87

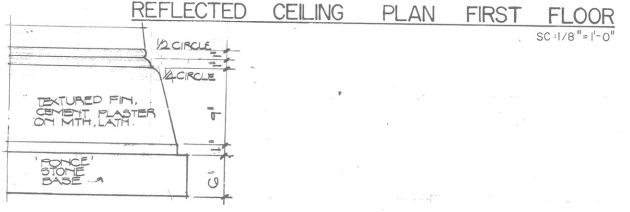
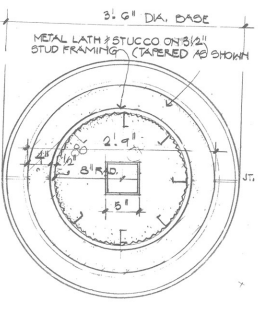
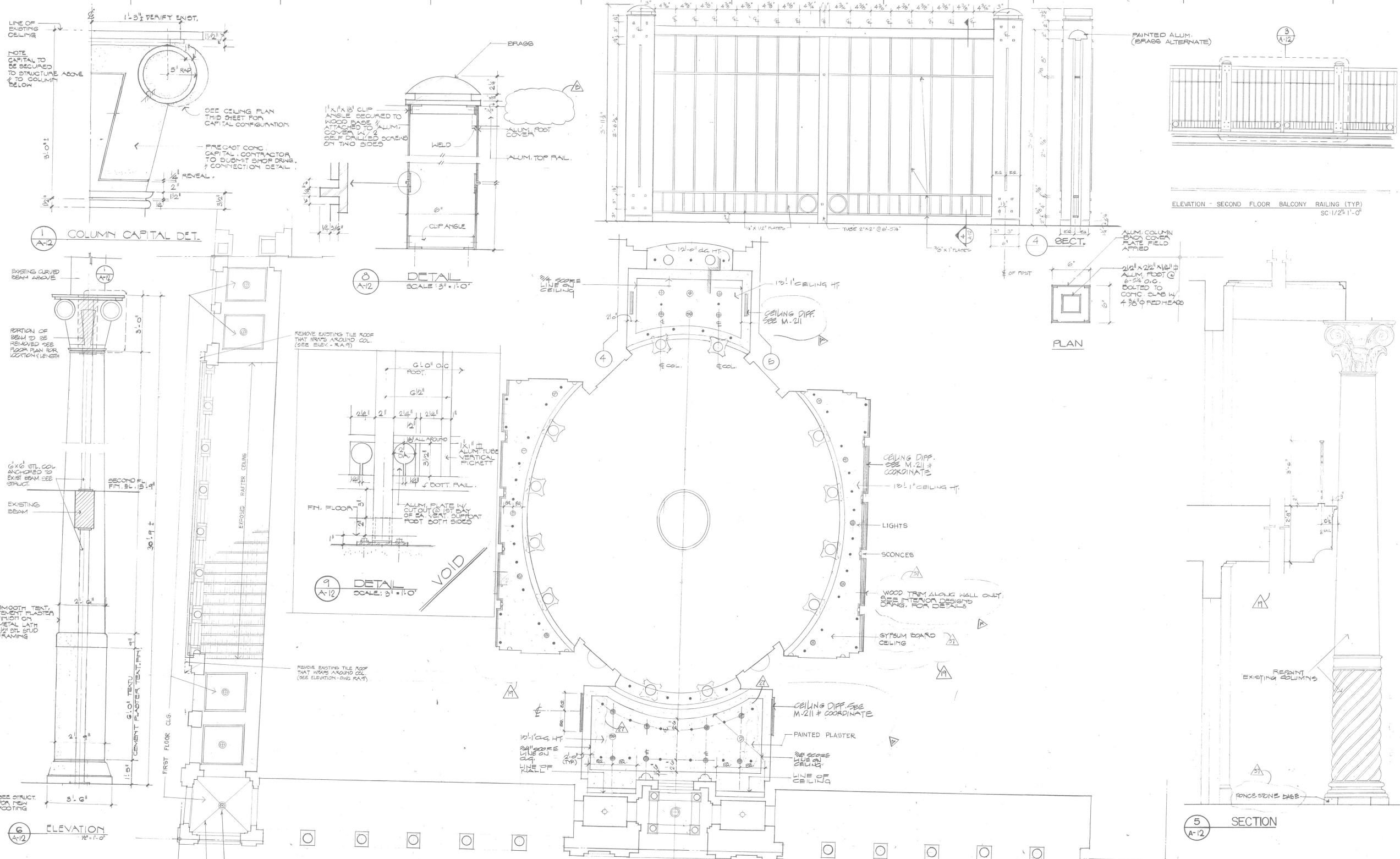
Sheet no.

RA8

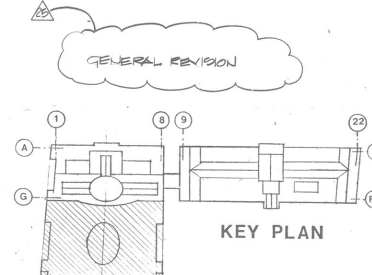


EXTERIOR ELEVATION. PONCE DE LEON BOULEVARD

SC: 1/4" = 1'-0"



- LEGEND:
- RECESS LIGHT FIXTURE
 - ⊙ SMOKE DETECTOR
 - ⊙ SPEAKER
 - SPRINKLER HEAD



Spillis Candela & Partners, Inc.
Architects/Engineers/Planners
Coral Gables, Florida

The Colonnade -
Coral Gables, Florida
Interbrook Development Company
Existing Building

**REFLECTED CEILING PLAN
AND
FIRST FLOOR PLAN &
PARTIAL SECOND FLOOR**

Project no. C-6049
Drawn by A.A.
Approved by A.A.
Date 12-8-86

Revisions:
ADD 1-12-87
ADD 2-19-87
ADD 6-28-87
ADD 7-12-87
ADD 9-15-87

Sheet no.
RA12